

PLAYBILL®

Town and Country Players
Doylestown, PA

TOWN AND COUNTRY PLAYERS PRESENTS

TOWN AND COUNTRY PLAYERS

HOLIDAY SHOW



DECEMBER 16-18

A TOWN AND COUNTRY TRADITION



RESERVE TICKETS

Tickets \$20 Child \$15
townandcountryplayers.org
OR call 800-838-3006

LOCATION

Town and Country Players
4158 York Road
Buckingham, PA 18912

SHOWTIMES

DECEMBER 16, 17 @8PM
DECEMBER 17, 18 @2PM

TOWN AND COUNTRY PLAYERS is a 501 (C) (3) Not-For-Profit Organization

Town and Country Players

PRESENTS

A Hot Cocoa Holiday

Conceptualized & Directed by

J. Giachetti

with

Jennifer Ahr
Marisa Albano
Sami Blake
Karen Cameron
Sierra Elise
Jessica Counts
Tobiann Corbin-Reinhard
Blake Donovan

Miki Fuentes
Alexandra Goia
Marisa Kaplan
Cameron Keller
Andrew Kind-Rubin
Julie Massa
Gabriella Morgan

Jackie Parzanese
Lucia Rivera
Phillip Scheller
Alexander Schultheis
Ana Sica
Jennie Temple
Maddy Wayne
Kelly White

Musical Director
Heidi New

Produced by
Jenny McNiven

Choreographer
Maggie Brennan

Songs

Hot Chocolate
A Marshmallow World
White Christmas
Kissin in the Cold
It's Not Christmas Without You
Christmas (Baby Please Come Home)
Christmas Isn't Canceled (Just You)
It's the Most Wonderful Time of the Year
Greatest Time of Year
When Christmas Comes to Town
Santa Tell Me
Man with the Bag
The Most Wonderful Day of the Year (Misfit Toys)
Grown-Up Christmas List
Sparklejollytwinklejingley
The Chipmunks Song
At This Table
All I Want for Christmas (Is my Two Front Teeth)
Nuttin for Christmas
I Want a Hippopotamus for Christmas
Rockin' Around the Christmas Tree
There is a Santa Claus
Rockin' Around the Pole
A Hand for Mrs. Claus
Surabaya Santa
What are you Doing New Year's Eve?
Sisters
The Prayer
When We're Together
What Christmas Means to Me

DIRECTOR'S NOTE

First and foremost, thank you so much for seeing this production. Not only am I thanking you for supporting Town and Country Players, but for supporting local theater and artists everywhere. Art is so important in this world, and after almost two years without it in its traditional form, it is a thrill to bring a production before an audience once again.

The holidays have always been my favorite time of year. I basically have Hanukkah gelt and Christmas egg nog coursing through my veins. The minute November 1st hits, I start blasting the yuletide bangers, screening my favorite specials, and trying to scope out the best light shows in the tri-state area. Simply put: I am the real-life Buddy the Elf. So when the opportunity arose for me to direct the holiday show at T&C again, my hand raised like an over eager student who knew all the answers.

My vision was to create something both classic and modern, using the themes of nostalgia and community to navigate our way through holly jolly hit after hit. I wanted there to be humor and fun, and most of all, a cast that truly wanted to be here because 1. They love to perform and 2. They love to make holiday magic.

I must say, not to hype you up too much before a show, that we assembled the Avengers: Endgame of holiday talent for this show. This cast is honestly incredibly talented, but more importantly, a joy to work with. I believe in my rehearsal rooms to paint in broad strokes and allow my actors the freedom to fill in those details so their voices are heard. The choices these actors have made... They make me laugh. They make me cry. They make me scream giddily in pure joy. I am so incredibly proud, and I know that they will blow you away!

I'd like to thank some individuals for making this show possible. This show would not be possible without our greatest cheerleader and defender, our producer, Jenny McNiven. Jenny led from the behind the scenes with an openness and positivity that truly spread to myself and the rest of the production team. Next, I'd like to thank our incredible stage manger, Jessa Casner, for her can do attitude, her dedication to this production, and her unique style and flare. Heidi New, our Music Director, is an absolute miracle worker, truly going above and beyond to make sure that every number was well rehearsed, stylistically fun, and showcased everyone perfectly. And Maggie Brennan, our Choreographer, made magic time and time again with every dance she choreographed. She made simple combinations into outstanding production numbers that will make you want to join in on the fun. I'd also like to thank Matt, Scott, Dave, and Janemarie, our amazing technical team, for helping bring the world of this show to life through lights, sound, and jaw dropping holiday set dressing. You have made my holiday dreams come true. I also want to thank the board of Town and Country Players for allowing me the opportunity to create this production for you! Lastly, I'd like to thank you, our audience and patrons, for your continued support. We hope to see you for more productions throughout T&C's 76th season in 2023.

Enjoy the show everyone.

A Note from T&C's President

Welcome to the Town and Country Players' 2022 Season. This represents a milestone year in our history, as this is our 75th season of bringing quality community theater to the Bucks County Area.

Town and Country Players got its start in 1948, with a production of *The Late George Apley*, performed at the Doylestown Borough School. T&C moved to our current location, "The Barn," in 1953, renting the barn until we purchased it in 1962. Throughout the years, we have made many improvements to our space, including air conditioning, catwalks, raked seating, sound and lighting improvements, and - perhaps most importantly - our addition in 2014 which tripled the number of restrooms and added rehearsal space.

That said, T&C is more than just the name and the barn that we perform in. If one looks at our database of past productions, one will find a list of nearly 4000 individuals who have been involved in our productions over the years, from actors, musicians, directors, and producers, to designers, technicians, carpenters, stage crew, and stage managers. This doesn't include those members who have supported us in other areas, including the myriad of business/operational areas required to continuously bring productions to the stage.

Of course, all the effort required to bring a production to the stage wouldn't count for much without the support of our community. From the 400 patrons who came to see *The Late George Apley* in 1948 to the 150 who can fill the house for each performance our intimate theater today, without our patrons, all those hours and late nights spent rehearsing, designing, building would be for naught.

I also want to thank all those who have donated to T&C over the years. Your generosity has enabled us to keep the lights on, improve our infrastructure, and weather hard times (like the last couple of years).

When we started to plan our 75th season, we decided to focus on large cast, generally happy/uplifting shows after two seasons impacted by COVID. We also wanted to celebrate our 75th season by selecting shows with either a tie to either T&C or to the Bucks County area. We are closing our milestone year with two familiar events. *Hot Cocoa Holiday* is this year's installment of T&C's traditional holiday show. Whether you have seen our previous holiday shows or not, I hope you enjoy today's performance.

Matthew Schultheis

President, Town and Country Players

A Christmas Poem

by *Emily Reese*

Deck the halls with bells of holly
What's your reason to be jolly?
Do you feel the world unkind?
What brings the spirit to your mind?
My family comes and hugs me tight
I see the North Star with its shining light
There are so many reasons for happiness
Each of us is deeply blessed
But life has not been easy, as of late
With a pandemic showing us a dimmer fate
But so far each one of us has survived
And in this theater we relearn how to thrive
We rediscover the holiday spirit
We listen to these voices and hear it
The songs are much older than our heartache
And we've taken the time we need to take
And now we're ready, we can stand here, be strong
Because smiling again is not wrong
As the gingerbread men take off their masks
We realize that even the worst times don't last
But the Christmas spirit will always come round
When we hear that familiar sound
When we fa la la la la and deck the hall
We can start to overcome it all
When people suffer, when your heart hurts
When things seem to be at their worst
That's when we need Christmas most of all
And we can have it, summer winter spring or fall
But most deeply in this month of December
It is important for us to remember
That no matter how things make us feel
Christmas can always help us heal

CAST

Cast Members

Performer	Jennifer Ahr
Performer	Marisa Albano
Performer	Sami Blake
Performer	Karen Cameron
Performer	Sierra Elise
Performer	Jessica Counts
Performer	Tobiann Corbin-Reinhard
Performer	Blake Donovan
Performer	Miki Fuentes
Performer	Alexandra Goia
Performer	Marisa Kaplan
Performer	Cameron Keller
Performer	Andrew Kind-Rubin
Performer	Julie Massa
Performer	Gabriella Morgan
Performer	Jackie Parzanese
Performer	Lucia Rivera
Performer	Phillip Schneller
Performer	Alexander Schultheis
Performer	Ana Sica
Performer	Jennie Temple
Performer	Maddy Wayne
Performer	Kelly White
Featured Dancers	Gabriella Morgan Alexandra Goia Sami Blake Miki Fuentes Jackie Parzanese

PRODUCTION TEAM

Production Staff & Crew

Director J Giachetti

Producer Jenny McNiven

Musical Director Heidi New

Stage Manager Jessa Casner

Choreographer Maggie Brennan

Technical Design David Sharper

Lighting Design Matthew Schultheis

Scene Design Consultant Janemarie Coultier

Light Board Operator David Massa

Program Kim O'Byrne
Jean Laustsen
Eric Raymond

WHO'S WHO



Jennifer Ahr

as Performer

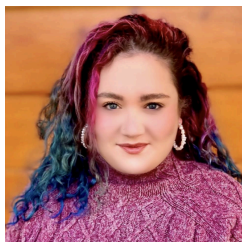
Jennifer hopes you enjoy the seasonal serenading and spirited singing in this holiday production! Previously at T & C in *The Sound of Music*, *The Best of the Best*, *Oklahoma!*, *The Hunchback of Notre Dame*, and several Holiday Shows and Zoom productions. Elsewhere *Evita*, *The Sound of Music*, *Cabaret*. Much love and thanks to my loves Paul, Madeleine, & Emilie.



Marisa Albano

as Performer

Marisa is an actress from Staten Island, New York, who is thrilled to be making her PA debut! She is a recent graduate from The College of Staten Island, majoring in drama with a minor in American Sign Language. She has loved singing all her life and is so happy to share that love with all of you! Some favorite roles lately are, Sally Perks in *Puffs*, Lilith in *She Kills Monsters*, and Al T. Wolf in *The True Story of The Three Little Pigs*. Holidays everyone, and enjoy the show!



Sami Blake

as Performer

Sami is excited to be a part of the Holiday show. She recently graduated from Ithaca College, with a BFA in Musical Theater. Some favorite credits: *Legally Blonde/Paulette*, *Annie/Miss Hannigan*, *Hookman/Jess*, *Rent/Ensemble*, *The Trail to Oregon/Mother*. Sami is extremely passionate about Body positivity, Equality and Mental Health Advocacy. Sami's main goal is to continue her best friend Eric Simon's legacy in all the art she creates. She wants to thank everyone in the show as well as J, Maggie, Heidi and Jessa for being an incredible team.



Karen Cameron

as Performer

Karen is over the moon to be involved in the 2022 Hot Cocoa Holiday Show! She is so grateful to be working with the amazingly talented cast and crew that has joined together to bring you all great holiday cheer and warm wishes to all! We hope you enjoy the show! So much love to my mom and dad, Forrest, Ryan, and my brothers and sister for their unending love and support. Season's Greetings to all!

WHO'S WHO



Sierra Elise

as Performer

Sierra is thrilled to make her T&C debut in *A Hot Cocoa Holiday*! She finds magic in the holiday season and hopes everyone loves the show. This past summer, Sierra performed in *Shrek the Musical, Jr.* at The Sunflight Theatre (NJ). Sierra is an 8th grade student and studies voice with Rita Perez. She is grateful to her family & friends for supporting her dreams. You can follow Sierra on Instagram at [sierra_rising](#)



Jesica Counts

as Performer

Jesica is absolutely thrilled to be performing in her first production at Town & Country Players. For the past year, she's been performing in plays at Village Players of Hatboro. So, she's excited to get back to her singing roots & create some magical holiday music. Break legs cast & crew & happy holidays to all!



Tobiann Corbin-Reinhard

as Performer

Tobi is thrilled to be making her holiday show debut and working with this incredibly talented cast, crew, and production team! Tobi was last seen on the T&C stage playing Sister Berthe in *The Sound of Music* and couldn't be happier to once again share the stage with some of her favorite fake nuns. Many thanks to The Silver Fox for his unwavering love and support.



Blake Donovan

as Performer

Blake is an actress and singer in Central NJ. Some favorite credits include *Matilda the Musical*/Teen Ensemble/Dance Captain, *Shrek The Musical*/Young Fiona and Mama Bear, *High School Musical*/Thespian, and *Internet Cats*/Sleepy Cat. Blake trains in acting and voice at The Prep under Andrew Wigder and Sam Parker. She would like to thank her instructors at The Prep, her family and friends, and everyone who has supported her through the years! She is thrilled to join the stage with such talented musicians and be a part of this holiday extravaganza!

WHO'S WHO



Miki Fuentes

as Performer

Miki is thrilled to be back on stage with T&C for another holly, jolly holiday show! Some of her past credits include Sandy Cheeks in *The Spongebob Musical* (Civic Theatre of Allentown) and Hannah in *Puffs!* (T&C). She may be asking Santa for a hippopotamus this Christmas, but her biggest wish is for everyone watching to appreciate the amazing folks in the production team, cast, and crew for all of their hard work on this wonderful show.



Alexandra Goia

as Performer

Alexandra is truly excited to be part of another wonderful Christmas show with T&C! Formerly having been Mrs. Claus (#5), who has since separated from the jolly man himself, she has become a festive diva in her own right. She's ready to be rocking around the Christmas tree, the North Pole, and whatever else could use some rocking and rolling. Previous roles include Sunny the Bard/The Stage Manager *Lions in Illyria* (SIST) and Martha Dunnstock in *Heathers the Musical* (DUC). She thanks her parents for always being her biggest fans, and J for constantly pushing her out of her comfort zone to do what she loves to do.

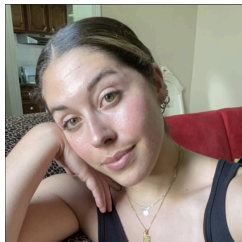


Marisa Kaplan

as Performer

Marisa is a native of Bucks County and is making her debut in this year's Holiday Cabaret. She is a voice teacher and adjunct voice faculty at both The Pennington School & The George School. She is a graduate of the Steinhardt School at NYU where she studied Classical Voice and Vocal Pedagogy. She also holds a theatre degree from Franklin & Marshall College. She has been involved with the Miami Music Festival where she has played the role of Tigrane in Handel's *Radamisto* and covered the role of Pamina in Mozart's *Die Zauberflöte*. Her favorite roles include Mother Abbess from *The Sound of Music* and Anfisa in *Three Sisters*. Please check out her work at www.marisakaplan.com

WHO'S WHO



Cameron Keller

as Performer

I am so excited to be in my first show here at Town & Country players! It's a breath of fresh air to be able to perform again with some amazing people. I'd like to thank my family and friends for always supporting every endeavor, and my cat Whiskey for keeping me sane. During the day, I'm a geriatric speech pathologist, but after hours, you can catch me at the gym, or staying up too late scrolling on TikTok. Happy Holidays everyone, and enjoy the show!



Andrew Kind-Rubin

as Performer

Andy is thrilled to return to Town and Country after a six-year hiatus. Andy's previous T&C credits include Linus in *You're a Good Man Charlie Brown*, Larry in *Company*, *Inherit the Wind* and *Baby*. Other favorite roles include Franz Liebkind in *The Producers*, Sir Evelyn in *Anything Goes* and the father in *All Shook Up*. He looks forward to continued involvement and the opportunity to exercise his vocal chords and acting chops.



Julie Massa

as Performer

Julie is thrilled to be spreading holiday cheer the best way: by singing loud for all to hear! She hopes everyone enjoys the show and finds it a lovely end cap to T&C's 75th season. Happy Holidays to all and thanks always to our fantastic cast and crew. Love to David and Graham!



Gabriella Morgan

as Performer

Gabriella is thrilled to be back at T&C for another holiday show. Some of her previous roles include *Spring Awakening* (Dance Captain), *A Christmas Carol* (Mrs. Cratchit), *Heathers* (Jill Sweeney/Big Bud Dean), *There's Snow Place Like Home for the Holidays* (Grace), and *She Kills Monsters* (Kaliopé). She wants to give a massive thank you to the cast and production team for helping make the holiday season magical. She would also like to give her biggest and warmest thanks to her family for all of their love and support during this process.

WHO'S WHO



Jackie Parzanese

as Performer

Jackie is delighted to be sharing the stage with so many fantastically festive friends in this year's holiday show. Most recently, you may have seen her on stage in *A Streetcar Named Desire* as Eunice Hubbel (T&C), or behind the scenes as a Stage Manager of *A Christmas Carol* (T&C). Jackie is also VP of Youth Outreach on T&C's Board of Directors. When she's not rocking around the pole, you can find her teaching at Pine Run Elementary School. She would like to thank Dana for everything she does, and she hopes you enjoy the show!



Lucia Rivera

as Performer

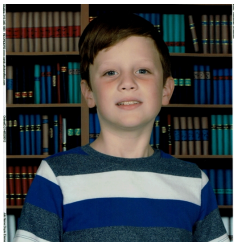
Lucia is very excited to be a soloist in *A Hot Cocoa Holiday*! She loves acting and singing and she loves doing shows at Town & Country Players, especially when she gets to meet new people. She would like to thank her family for their help and support: Charlotte, Daddy, Mommy, Brett, and Nena.



Phillip Schneller

as Performer

Phillip is very excited to be a part of this year's Holiday Show! Phillip is currently a senior at Central Bucks High School East and performed at Town & Country as ensemble in *Oklahoma!*, Skut Farkus in *A Christmas Story*, and ensemble in the 2019 Holiday Show. He could also be seen as Sebastian in Patriot Players' production of *The Little Mermaid* in November. He wishes the rest of the company a great show and happy holidays to all!



Alexander Schultheis

as Performer

Alexander is thrilled to be back on stage at T&C for another Holiday Show! He was last seen last December searching the skies for Santa on stage. Alexander is in second grade and loves everything Christmas. When not decorating or baking cookies, he is actively involved in cub scouts, karate, and curling. Much love to his mom and dad and family for supporting him and to his cat Picasso whom he is sad cannot participate.

WHO'S WHO



Ana Sica

as Performer

Ana is excited to be making her debut on the T&C stage! Ana is a third-grade teacher at Pine Run Elementary, and she graduates next week with her Master's in Social-Emotional Learning. She's excited to be back on the stage doing what she loves, and she has enjoyed working with the cast and crew in this sparklejollytwinklejingle holiday show. Ana wants to thank her family, friends, coworkers, and students for coming out this weekend and appreciates them for their constant love, laughter, and support every day!



Jennie Temple

as Performer

Jennie is excited to be a part of this very talented group of performers at Town & Country Players. Jennie has performed with a variety of choirs from her college choir to the Austin Civic Chorus and most recently the Round Rock Community Choir in Round Rock, TX. Jennie currently lives in Chalfont with her family.



Maddy Wayne

as Performer

Maddy's stage experience included last year's T&C's Christmas Play and T&C's summer camp one-act plays. She was featured as the Candyman in *Willy Wonka*, Zazu in *The Lion King*, and Spot in *101 Dalmatians* as well as a featured soloist in her school choir and a cantor at her local church. She loves to sing and is very excited about being back at T&C. She would like to thank her Mom, Dad, brother Christian, MiMi, Pop Pop, Grandmom and Dedu for all of their support and love.



Kelly White

as Performer

A Hot Cocoa Holiday marks Kelly's third production with T&C! Last seen as Eve in *Christmastown* Kelly is thrilled to continue making Holiday magic with the lovely Jessa Casner. Kelly thanks her friends, neighbors, and extended family for their constant love, support, and encouragement.

WHO'S WHO



J Giachetti

Director

J (b. 1995) is a professional non-binary actor, Dramatist Guild Playwright and Lyricist, Artistic Director, arts educator, and avid poet. Some of their previous creative/performance credits have been The Nurse in *Romeo and Juliet*, Wayne Hopkins in *Puffs* Quasimodo in *The Hunchback of Notre Dame*, Harry in *Company*, the book writer and lyricist of Off-Broadway bound *Relapse the Musical*, and director of *She Kills Monsters* (2022), *Dog Sees God* (2021), *Laramie Project* (2019), *How I Learned to Drive* (2019), and *Rabbit Hole* (2018). They are also the Community Engagement Manager, as well as a performing and teaching artist, with Staten Island educational theater company, Illuminart Productions.



Jenny McNiven

Producer

Jenny is so glad she was gifted the opportunity to help bring this magical production to our audiences this winter. Jenny has previously produced *The Best from the Best Cabaret* with T&C, and recently directed *Kismet for Marshmallows* as part of our One Acts Festival. Favorite roles at T&C include Esmeralda in *The Hunchback of Notre Dame* as well as performer in our 2018 & 2019 Holiday Shows. Much love to Rykerman, the redheads, awesomeness, and many thanks to J., Vicky, and the rest of the production team.



Heidi New

Musical Director

Heidi is excited to return to the T&C Stage for this year's holiday show. She has been seen in past Town and Country productions most recently as Sister Margaretta in *The Sound of Music*. Most of the time, Heidi can be found teaching general music and theatre at an all-boys private school. Thank you to my production team members for making this holiday season a special one and for my friends and family for all their support. Happy Holidays to all!

WHO'S WHO



Maggie Brennan

Choreographer

Maggie is excited to be back at T&C for her 2nd holiday show! She graduated from Rider University with a BA in Arts Entertainment and Industries Management. She has been training in dance for 22 years, including 4 years within the Princeton Ballet Academy. Maggie is a competitive dance instructor and choreographer based in NJ and is excited to open her dance school, Maggie's Dance Academy in the near future #MDA! Shoutout to Joey, Mom, Dad, Julie, Nick, ReyRey, Kirby & Harley; I have the best hype crew! Thank you J for allowing me to work alongside you once again!



Jessa Casner

Stage Manager

Jessa is overjoyed to be involved in a production that showcases such wonderful and talented humans! This is her first-time stage managing since college and it has been a fun and exciting journey. Thanks so much to J., Jenny, Maggie, Heidi, Matt, David, and Vicky for their combined efforts and dedication to making this holiday show such a delight! Much love to Kev, Barnabus, and Peabo

Matthew Schultheis

Lighting Design

Among his many contributions to T&C, Matthew's previous T&C work includes lighting design for *Deathtrap*, *Bonnie and Clyde*, *Holes*, *Good People*, and *Anne of Green Gables*. His stage management credits include the last few family musicals, *The Hunchback of Notre Dame*, *Oklahoma!*, and *The Sound of Music*. He also has been serving as the President of Town and Country Players since 2020. Love to Vicky and Alexander.

David Sharper

Technical Design

David has been involved in over a hundred shows at T&C since 1984. He designed sets for *Guys & Dolls*, *Young Frankenstein*, *A Christmas Story*, *Bonnie and Clyde*, *The Hunchback of Notre* and more. He also serves as Treasurer for T&C.



"The farmer has to be an optimist or he wouldn't still be a farmer"
Will Rogers

None Such Farming Season Highlights

- April to Late May....Herb Plants
- May to Early June....Asparagus
- Early to Mid June....Strawberries
- Late July to sometime in September....Sweet Corn and Tomatoes
- October....Pumpkins and Winter Squash
- All year....None Such Raised Black Angus Beef

Seasonal Events on None Such Farm

- Late April, Early May Saturdays & Sundays TBD
- Greenhouse open for purchase of our homegrown plants
- Early to Mid June TBD
- Pick Your Own Strawberries
- October Saturdays & Sundays TBD
- Our Pumpkin Fields are open

None Such Market

100% Black Angus Beef raised on our Farm

100% Non-GMO Feed - Freshly Cut Steaks & Roasts - Freshly Ground Beef - Available in our Meat Shop

NONE SUCH MARKET open WEDNESDAY THROUGH SATURDAY 10 am to 6 pm
 Closed Sunday through Tuesday

4458 York Rd. Buckingham, PA 18912

215-794-5201

nonesuchfarm.com



Congratulations from all of us at the UPS Store!



The UPS Store
 Serving Warminster & Doylestown

- Packing & Shipping
- Small Business Services
- Office & Mailing Services
- Professional Printing
- Mail & Postal Services
- Notary Services
- Faxing Services
- Veteran/Armed Service Discounts

DOYLESTOWN: 132-A VETERANS LANE
 215-230-9898 • store3797@theupsstore.com

WARMINSTER: 868 WEST STREET ROAD
 215-672-5330 • store4907@theupsstore.com

NEW STORE IN WARRINGTON: LATE SPRING/EARLY SUMMER 2022



Paul Waldowski
215-275-6741
PWaldowski24@gmail.com

Over 85 Years of Professional Experience



Meg Waldowski
215-275-6940
MWaldowski4@gmail.com

RE/MAX[®]
Millennium
215-379-1100

**Open 7-days a week...
Stop by and find out
what we're all about!**



45 E. STATE ST., DOYLESTOWN, PA 18901



WILLIAM PENN
BANK

FEATURING

**BANKING THAT
MAKES YOU THE
STAR OF THE SHOW**



www.william penn.bank 800-845-3577



Community Banking at heart.



Larry E Krevitz, DDS PC

Family & Cosmetic Dentistry
122 N York Road- Suite 11
Hatboro Pa 19040
Drkrevitz.com 215 674 2505
info@drkrevitz.com

Excellence By Choice



**Proud Supporter of
the Arts and Community Theater
in Bucks County**



Shelly Law Offices, LLC

Concentrating in Plaintiff Personal Injury and Wrongful Death Law



ph 267-454-7940 • fax 267-454-7941 • www.shelly-law.com
70 W. Oakland Ave., Suite 208 • Doylestown, PA 18901
carol@shelly-law.com • kwhite@shelly-law.com •
sfrankenfield@shelly-law.com



happy
happens
here.

1721 S Easton Road
Doylestown PA 18901
Phone: 215-343-3007
Doylestown@tlechildcare.com
Doylestown.tlechildcare.com

REPUBLIC BANK | Oak Mortgage



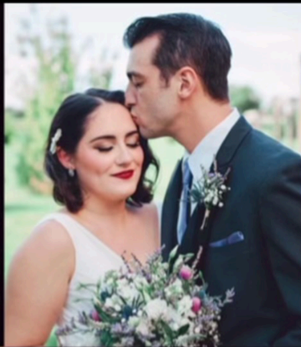
Oak Mortgage, a Division of Republic First Bank dba, Republic Bank, NMLSR#738460.

Joshua I Lerman (NMLSR#135143)
215-962-8586
jlerman@myrepublicbank.com

JUST CALL JOSH TO GET PREQUALIFIED

Eight Neshaminy Interplex, Suite 105, Trevoese, PA 19053

DRESS YOUR BEST FOR BRIDAL WITH DESIGNERS LIKE MADI LANE, MORILEE, STELLA YORK, MIA SOLANO, AND MORE



ALL-INCLUSIVE TUXEDO AND SUIT RENTALS FROM DESIGNERS LIKE IKE BEHAR, MICHAEL KORS, RALPH LAUREN, AND MORE



Darianna Bridal & Tuxedo

241 Easton Road
Warrington, PA 18976

Call or Text: 215-491-8500
www.dariannabridal.com





Robert O'Reilly

Financial Advisor

Doylestown Wealth Management

165 West Ashland St.
Doylestown, PA 18901

Concerned about retirement?

Call for a FREE consultation to discuss your financial goals. Find peace of mind with sound retirement planning advice.

267-815-5669

Robert.oreilly@lpl.com

**CANDLEWYCK
BAR & GRILL**

RESTAURANT • TAVERN • TAKE-OUT

- **Show your ticket stub and receive 20% off your check!**

This discount is good for one use and only valid the week of the ticket date

- **Stop by our Bottle Shop! "Home of 1,000 Beers" with the area's BEST prices!**



2551 Durham Road (Corner of Rt 202 & 413) • 215-794-8233



FIRST
PARTNERS
ABSTRACT COMPANY

Give us a call
or
Check out our website:
www.firstpartnersabstract.com

*Interested in purchasing a home or refinancing
and need to a full service title insurance
company to assist you?*

Want to know a property's recorded history?

Curious about what title insurance involves?

We specialize in making the process of purchasing title insurance as simple as possible. At First Partners Abstract Company we want to make you a partner in the process. We strive to work together to make the transaction run as smoothly as possible.

Servicing Pennsylvania and New Jersey for over 25 years.

Our Newest office is located at:
169 North Broad Street
Doylestown PA 18901.
Phone #: 267-864-5020

Our Corporate office is located at:
605 Corporate Drive West
Langhorne, PA 19047
Phone #: 215-579-3223

CREMATION SHOULD NOT BE OUTSOURCED



Most funeral homes use a third-party contract crematory. Varcoe-Thomas assures every step of care for your loved one is managed within our private facility. If you choose cremation, let our family care for your family.

Jason "Oz" Oszczakiewicz
Owner/Supervisor
*Serving Families with Compassion,
Respect & Professionalism Since 1879*

215-348-8930



State Of The Art Crematory Now On Site

344 North Main Street
Doylestown, PA 18901

www.varcoethomasfuneralhome.com



Allstate®

You're in good hands.

**24-hour
Customer Service**

Mike McCusker

Agency Owner

McCusker Insurance Agency Inc

Allstate Insurance

Philadelphia, PA 19111

Phone 215-728-7800

Fax 215-728-7896

mikemccusker@allstate.com

10431 Academy Road, Suite "O"

Philadelphia, PA 19114

215-612-5558



**Plumbing • Emergency Repairs • Water Heaters
Water Treatment • Bathroom Remodeling**

We Do Well Pumps! • 215.348.3113 • KniesesPlumbing.com

3633 Old Easton Road, Doylestown, PA 18902

PA Lic# 004105



"North America's Premier Inspection Service"
Independently Owned & Operated

CHRIS MARSHALL

Owner / Inspector
Bonded & Insured

PA Radon Cert. #2713



NATIONAL PROPERTY INSPECTIONS®

Residential • Commercial • Warranty Inspections • Relocation

Bus. (215) 579-1996 • Cell (215) 416-9013 • Fax (215) 579-1445
email: cmarshallnpi@verizon.net • www.npiweb.com/cmarshall

THE STATION THAT STILL REMEMBERS

Radio Delaware Valley
www.wrdv.org

BIG BAND • SWING • ROCK & ROLL
DOO-WOP • RHYTHM & BLUES
plus other old time nostalgia

BROADCASTING
IN PHILADELPHIA

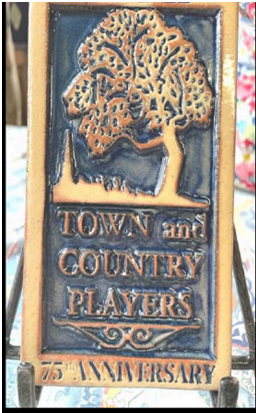
**STREAMING
24/7 ONLINE**

Listen online at www.wrdv.org or with Alexa, Siri, & other digital assistants.

**Shop Prime Day deals at
smile.amazon.com to
support us while you shop,
at no cost to you**

amazon smile

When you #StartWithaSmile, Amazon donates 0.5% of the purchase price to Town and Country Players. Bookmark the link <https://smile.amazon.com/townandcountry> and support us every time you shop.



Announcing
Town and Country
Players
75th Anniversary
Moravian Tile



In collaboration with The TileWorks of Bucks County, Town and Country Players has created a commemorative Moravian Tile celebrating our 75th Anniversary as a Community Theater.

Tiles are \$75 each. Go to townandcountryplayers.org for details

TOWN AND COUNTRY PLAYERS
2023 SEASON



APRIL 21 - MAY 6

MONTY PYTHON'S SPAMALOT

A new musical *inspired* off from the motion picture MONTY PYTHON *and* the Holy Grail



ONE ACTS

MAY 19-21

**SPECIAL
EVENT**

JUNE 9-17

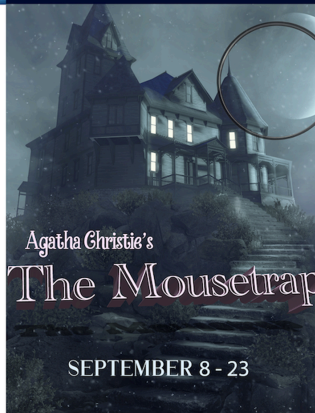


**seussical
THE
MUSICAL**

JULY 14-29

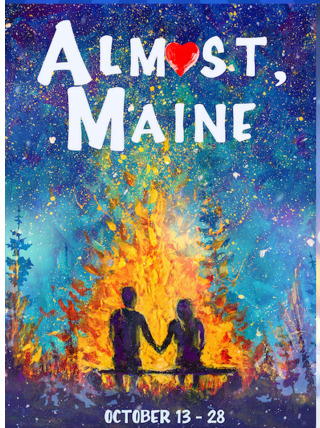
**YOUTH
WORKSHOPS**

JULY 17-31



Agatha Christie's
The Mousetrap

SEPTEMBER 8 - 23



**ALMOST,
MAINE**

OCTOBER 13 - 28



Christmas Show

NOVEMBER 17 - DECEMBER 2

TOWN AND COUNTRY PLAYERS PRESENTS

**HOLIDAY
SHOW**



DECEMBER 15-17
A TOWN AND COUNTRY TRADITION

***Proud Supporter of
the Arts and Community Theater
in Bucks County***



Shelly Law Offices, LLC

Concentrating in Plaintiff Personal Injury and Wrongful Death Law

ph 267-454-7940 • fax 267-454-7941 • www.shelly-law.com
70 W. Oakland Ave., Suite 208 • Doylestown, PA 18901
carol@shelly-law.com • kswwhite@shelly-law.com
• sfrankenfeld@shelly-law.com



**We Fight
Because We Care**

Fierce litigators who cut through the confusion.



Proudly Supports

Town and Country Players Theater's
75th Season
and their endless dedication
to performing and theater arts.



"Break A Leg, Town and Country Players"

Community Banking at heart.

FDIC www.williampenn.bank 800-845-3577

