

PLAYBILL®

Town and Country Players
Doylestown, PA

TOWN AND COUNTRY PLAYERS

It's a Mystery!



Clue

On Stage

Based on the screenplay by Jonathan Lynn
Written by Sandy Rustin

Additional Material by Hunter Foster and Eric Price
Based on the Paramount Pictures Motion Picture
Based on the Hasbro board game CLUE
Original Music by David Abbinanti



SEPTEMBER 30 - OCTOBER 15

Directed by SUSAN GALLI
Produced by SARAH LECLAIR



RESERVE TICKETS

Tickets \$25
townandcountryplayers.org
OR call 800-838-3006

LOCATION

Town and Country Players
4158 York Road
Buckingham, PA 18912

SHOWTIMES

September 30, October 1, 7, 8,
14 & 15 at 8:00 PM
October 2, 9 and 15
at 2:00 PM

TOWN AND COUNTRY PLAYERS is a 501 (C) (3) Not-For-Profit Organization

Town and Country Players

PRESENTS

CLUE: ON STAGE

Based on the screenplay by **Jonathan Lynn**

Written by **Sandy Rustin**

Additional Material by **Hunter Foster** and **Eric Price**

Based on the **Paramount Pictures** Motion Picture

Based on the Hasbro board game **CLUE**

Original Music by **David Abbinanti**

with

Sean Matthew O'Neill	Kevin Palardy	Paul Waldowski
Kyla Donnelly	Melissa Mongi Copestake	Roseann Enwright
	Jeremy Weir	

Directed by

Susan Galli

Produced by

Sarah LeClair

Time

The play begins just before dinner on a dark and stormy night not far from Washington D.C., in 1954.

Place

Boddy Manor. A mansion of epic proportions and terrifying secrets.

There will be No Intermission

Clue: On Stage is presented by special arrangement with The Araca Group, Work Light Productions, and Michael Barra/Lively McCabe Entertainment.

Produced by special arrangement with Broadway Licensing.

(www.broadwaylicensing.com)

The video or audio recording of this performance by any means is strictly prohibited

Town and Country Players 2022

DIRECTOR'S NOTE

I am so thankful to the group of inspired and hard-working people who saw a barn and imagined a theater. The space they created is unique and a pleasure to work in. I believe that the founders of Town and Country Players would be proud of the quality theater that has been performed in this space over the last 75 years. The dedication and continued efforts of the people that have kept the theater's doors open for all these years should also be applauded.

I hope you had the chance to see the shows in the 75th season to date. Directors Sheldon Zeff, Jon Knapp and John Newman set a very high standard for the directors of the remainder of the season to meet. The recent One-Acts were an excellent opportunity for directors to become acclimated with working in this space and giving playwrights the opportunity to see their plays performed for the first time. I am excited to see the future directorial efforts from the directors of the One-Acts. I also hope the 24-hour play festival becomes a regular addition to future seasons.

Completing the 75th season are two holiday classics directed by women with impressive directorial experience, both at Town and Country and in the region. A Christmas Carol and The Nutcracker will be two shows that will entertain and get the audience in the holiday spirit. I would like to thank each member of the audience for coming to see this show. I hope you enjoy this production of Clue as much as I have enjoyed bringing it together.

Susan Galli
Director

CAST

Cast Members

Wadsworth	Kevin Palardy
Mr. Green	Sean Matthew O'Neill
Mrs. White	Melissa Mongi Copestake
Colonel Mustard	Paul Waldowski
Mrs. Peacock	Kyla Donnelly
Professor Plum	Jeremy Weir
Miss Scarlet	Roseann Enwright
Yvette	Kellie Cooper
Mr. Boddy	Justin Agins
Cook, et al	Karen Cameron
Cop, et al	David Massa
Motorist	Alec Kravitt

PRODUCTION TEAM

Production Staff & Crew

Director	Susan Galli
Producer	Sarah LeClair
Stage Manager	Julie Massa
Assistant Stage Manager	Michael Schiumo
Pianist/Orchestrator	John Calkins
Set Design	Andy Parsons
Scenic Design	Barb Emch
Lighting Design	Joe Schiwall
Sound Design	Stuart Wyss
Hair Design	Lynne Anne Donchez
Master Carpenter	Jon Knapp
Special Effects/Weapons Consultant	David Galli
Light Board Operator	Madelyn Weitkunat
Sound Technician	Jessa Casner
Stage Crew	Suzanne Ardite
Stage Crew	Dana Joy Carducci
Stage Crew	Michael McClintic
Stage Crew	Jenny McNiven
Stage Crew	Jackie Parzanese
Stage Crew	Joseph Perignat
Stage Crew	Victoria Schultheis
Poster Art Design	Jill M. Brown
Screenplay by	Jonathan Lynn
Written by	Sandy Rustin
Additional Material by	Hunter Foster
Additional Material by	Eric Price
Program	Kim O'Byrne Jean Laustsen Eric Raymond

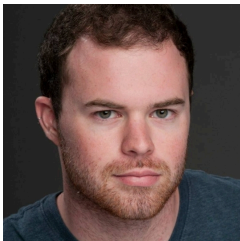
WHO'S WHO



Kevin Palardy

as Wadsworth

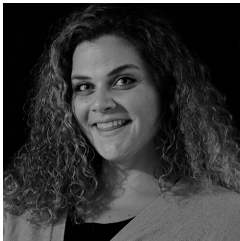
Kevin is properly chuffed to be a part of this production's amazing cast and crew! Kevin is no stranger to the T&C stage, having appeared in productions here since 2006. A huge thanks to all his family and friends for all their love and support!



Sean Matthew O'Neill

as Mr. Green

Sean is beyond excited to be back with T&C after over 3 years! Last seen as Dr Fine/Dr Madden in *Next to Normal*, other credits include Martin - *Seminar*, Bob Cratchit - *A Christmas Carol* & Jason - *Ordinary Days*, among others. Thank you to all my friends & family for their love & constant support.



Melissa Mongi Copestake

as Mrs. White

Melissa is thrilled to be part of this wildly fun show. Melissa was previously seen in *The Hunchback of Notre Dame* (Clopin), *Willy Wonka* (Ms. Teavee), and *Holes* (Kate Barlow). Melissa would like to thank the production team, this talented cast, her friends, and family for all their support. Melissa needs to thank her biggest fans Gary, Vincent, and Gia who she only has flames of love for.

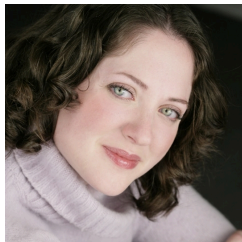


Paul Waldowski

as Colonel Mustard

Paul is happy to be a part of this hilarious play and has worked hard with all the cast members to develop the ultimate characters, in his case - Colonel Mustard! Paul has recently been seen in T&C's *Guys and Dolls* as Big Jule and has had various opportunities to both act and direct shows at T&C. Much appreciation to family & friends and much thanks to Sue Galli for bringing out the best in all of us.

WHO'S WHO



Kyla Donnelly

as Mrs. Peacock

Kyla is excited to return to T&C, recently appearing as Stella in *A Streetcar Named Desire*. Other credits: *Sally-Tally's Folly*, *Annette-God of Carnage*, *Karen-August: Osage County*, *Gabriella-Boeing*, *Boeing*, *Meip-Diary of Anne Frank*, *Mrs Kirk-Little Women*, *Paulina-A Winter's Tale*, *Mistress Page-Merry Wives of Windsor*, *Stepmother-Into the Woods*, *Kate Monster-Ave Q*, *Mary Amnesia-Nonsense*, *Nancy-Oliver!*



Jeremy Weir

as Professor Plum

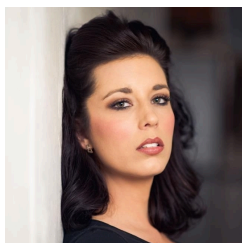
Jeremy is excited to be appearing in *Clue* after appearing as Harry the Horse in *Guys and Dolls* this season. His bio includes *Into the Woods*, *Little Shop of Horrors*, and *West Side Story* and he is a 1996 graduate of AMDA in NYC. He would like to thank the cast and crew for all the work bringing this show to life. He would also like to thank his wife Michelle and family for their love and support.



Roseann Enwright

as Miss Scarlet

Roseann is thrilled to be back on T&C's stage! Previous roles include Josephine in *Big Fish*, Maureen Johnson in *Rent*, Sheila Franklin in *Hair*, and Marguerite St. Just in *The Scarlet Pimpernel*. Much love to her family, the cast and crew, and her J's!



Kellie Cooper

as Yvette

Kellie is a Philadelphia based actor who has been performing in this area for the past 15 years. *Clue* has been a project she has always wanted to work on and she couldn't imagine doing it with anyone other than Susan and this amazing cast. All the thanks to her lucky penny for his support, love, and constant laughter.

WHO'S WHO



Justin Agins

as Mr. Boddy

Justin is elated to be making their debut at T&C with the cast and crew of *Clue*! You may also know them as Bitelle the Cagelle from Music Mountain Theatre's production of *La Cage Aux Folles*, or as the voice of Officer Brusky on *The Kit Bull Story* Podcast.



Karen Cameron

as Cook, et al

Karen is so very excited to be involved with this amazing production! Other recent shows she has been involved with are *The One Acts*, *Guys and Dolls*, and *There's No Place Like Snow for the Holidays*. It's always a privilege to be a part of the Town and Country Players community. Enjoy the show!



David Massa

as Cop, et al

David is thrilled to make his onstage debut at T&C. Thanks to the cast and crew for making this such a fantastic show to start with! Previous credits include *The Robber Bridegroom*, *Complete Works*, and *The Sound of Music*. Love to my family, friends, and pets.



Alec Kravitt

as Motorist

Alec is elated to join T&C for *Clue*! *Clue* would be Alec's third post-college production after ToPoF and a variety of plays by Albert Fried-Cassorla. Alec thanks his friends and family for all the love and support!

WHO'S WHO

Susan Galli

Director

Clue is one of my favorite board games and T&C's stage is one of my favorite places to perform, direct and see live theater. Fun facts - many of the weapons used in tonight's murders have been in previous shows I've directed at T&C including; a gun from *Bonnie and Clyde* and a knife from *Deathtrap*. I also loaned Yvette the feather duster I used when I played Bertha in *Boeing Boeing*. I am very grateful to an amazing production team, wonderful cast and supportive husband who made this show so fun and special. Thank you for coming to see this show.

Sarah LeClair

Producer

Sarah is embarking on her third version of this show, having directed *Clue: On Stage* at CB South, and the improvised version *Murder Manor* at ComedySportz Philadelphia. Sarah has been with T&C since 1998, and has taken on every conceivable role onstage and backstage. You may remember her as Myra Bruhl in last fall's *Deathtrap*. This season she will appear as several women in our next show, *A Christmas Carol*.

Julie Massa

Stage Manager

Julie is excited to be back in the stage manager seat for the first time in a while. With T&C she has been both onstage and backstage in several shows since 2018. She is especially happy to be doing a show with her husband who she hopes breaks a leg in his T&C debut! Love to David, Graham, & Buddy!

Michael Schiumo

Assistant Stage Manager

Michael is getting his street cred, for the first time in a long time, backstage. Recently he directed a one act in the *One Act Festival (Dutch Cassidy and the Skydance Guy)* and last appeared on stage as Nathan Detroit in *Guys and Dolls*. He has been with T&C since 2006, and has no plans to leave anytime soon. Thank you to Susan, Sarah & Julie and break legs to a hilarious & talented cast.

WHO'S WHO

John Calkins

Pianist/Orchestrator

John is humbled to be joining T&C for the first time! John is an avid performer in a wide range of genres as a singer, pianist, teacher & music director. Thank you to this great cast and crew. Here's to a great show – How did It really happen?

Andy Parsons

Set Design

Andy is very excited to be designing and building sets for the first time at T&C. Andy is a designer and builder from Pennington NJ. He has over 40 scenic design and build credits including: *Hairspray, Picnic, Chicago, Pippin, Much Ado About Nothing*, among many others.

Joe Schiwall

Lighting Design

Joe is excited to be a part of *Clue*. This is his first season at T&C and is enjoying every minute of it!

Stuart Wyss

Sound Design

Stuart enjoys the tech of theater and is happy to assist with sound effects and sound design on this show, produced by his talented wife, Sarah LeClair. It's no mystery why this is a great show!

Lynne Anne Donchez

Hair Design

It's a pleasure to assist in *Clue*.

WHO'S WHO

Madelyn Weitkunat

Light Board Operator

Madelyn is delighted to be a part of the production of *Clue*! This is Madelyn's first production with T&C and also her first out-of-school show. She would like to thank the CB South's Titan Techies for all she learned and the amazing experience. Also, her parents, who have supported Madelyn throughout her whole journey.

Jessa Casner

Sound Technician

Jessa is thrilled to join this talented group for a hilarious mystery!! She's always happy to be doing work at T&C in any capacity! She's going to ensure that everybody sounds crystal clear at each and every performance!



Jonathan Lynn

Screenplay by

Jonathan has directed 10 feature films including the cult classic *Clue* (wrote the screenplay), *Nuns on the Run*, *My Cousin Vinny*, *The Distinguished Gentleman*, *Sgt. Bilko*, *Greedy*, *Trial and Error*, *The Whole Nine Yards*, *The Fighting Temptations* and most recently, *Wild Target*. His first produced screenplay was *The Internecine Project* (1974). TV writing credits include dozens of episodes of comedy series but he is best known for the successful, multi-award-winning BBC series *Yes Minister* and *Yes, Prime Minister*, co-written and created with Antony Jay. His numerous awards include the BAFTA Writers Award, Writers Guild, Broadcasting Press Guild, NAACP Image Award, Environmental Media Award, Ace Award and a Special award from the Campaign for Freedom of Information. Lynn received an MA in Law from Cambridge University and now lives in New York, describing himself as a recovering lawyer.



Sandy Rustin

Written by

Sandy is an actress and award-winning playwright. Her comedy, *The Cottage*, was recently presented by Manhattan Theatre Club with Jason Alexander (*Seinfeld*) directing, and is in development for an upcoming commercial production in NY. Her sketch comedy musical, *Rated P ... For Parenthood*, opened Off-Broadway at the Westside Theatre and was optioned for TV development with ABC, Kelly Ripa & Mark Consuelos. Sandy guest starred on Comedy Central's, *Inside Amy Schumer* and regularly appears at NY's The Upright Citizen's Brigade in "Gravid Water". She has worked with Loopers Unlimited for over 15 years as a voiceover actress. She is the Founding Co-Artistic Director of Midtown Direct Rep & an advocate for <http://cowdenfoundation.org/>. Northwestern University graduate. Sandy is a member of ASCAP, SAG, AEA, and the Dramatists Guild and is represented by Abrams Artists.



Hunter Foster

Additional Material by

Hunter is an Artistic Associate at the Bucks Co. Playhouse where he has directed: *Clue: On Stage* (World Premiere), *Guys and Dolls*, *Company*, *Ain't Misbehavin'*, *The Buddy Holly Story*, *National Pastime*, *The Rocky Horror Show*, *Summer of '42*, and *It's a Wonderful Life*. Other directing credits: *The Foreigner*, *Cabaret*, *My Fair Lady* (Cape playhouse), *Grease* (North Carolina Theatre), *Spamalot* (Casa Manana); and has directed productions of the *Million Dollar Quartet* for the Paper Mill Playhouse and others.

He co-wrote the stage adaptation of the movie, *Clue* and has written the books to two off-Broadway musicals: *Jasper in Deadland* and *Summer of '42*.

On Broadway, he has appeared in *The Bridges of Madison County*, *Hands on a Hardbody*, *Million Dollar Quartet*, *The Producers*, *Little Shop of Horrors* (Tony Nom.), *Urinetown*, *Les Misérables*, *Footloose*, *Grease & King David*. Hunter is a graduate of the University of Michigan.



Eric Price

Additional Material by

Eric has written the lyrics and book to the musicals *The Violet Hour*, *Radioactive*, *Presto Change-o*, *Around the World*, *Hello Out There*, *The Sixth Borough*, and additional material for the stage adaptation of the film *Clue*. Eric's adaptation of Jane Austen's *Emma* was commissioned in 2015 and has had over 150 productions worldwide. In addition to his career as a writer, Eric was the longtime assistant to Tony Award-winning director/producer Hal Prince and worked with him over the course of twelve years. He is a member of the Lincoln Center Directors Lab and has degrees in Directing from Indiana University and Musical Theatre Writing from NYU's Tisch School of the Arts. He is an Adjunct Professor of Musical Theatre at Pace University and Molloy College/CAP21.

With his collaborator, Will Reynolds, Eric won the 2018 Fred Ebb Award for Musical Theatre Writing.

www.ericpriceonline.com

T&C WANTS YOU TO KNOW.....

A Note from T&C's President

Welcome to the Town and Country Players' 2022 Season. This represents a milestone year in our history, as this is our 75th season of bringing quality community theater to the Bucks County Area.

Town and Country Players got its start in 1948, with a production of *The Late George Apley*, performed at the Doylestown Borough School. T&C moved to our current location, "The Barn," in 1953, renting the barn until we purchased it in 1962. Throughout the years, we have made many improvements to our space, including air conditioning, catwalks, raked seating, sound and lighting improvements, and - perhaps most importantly - our addition in 2014 which tripled the number of restrooms and added rehearsal space.

That said, T&C is more than just the name and the barn that we perform in. If one looks at our database of past productions, one will find a list of nearly 4000 individuals who have been involved in our productions over the years, from actors, musicians, directors, and producers, to designers, technicians, carpenters, stage crew, and stage managers. This doesn't include those members who have supported us in other areas, including the myriad of business/operational areas required to continuously bring productions to the stage.

Of course, all the effort required to bring a production to the stage wouldn't count for much without the support of our community. From the 400 patrons who came to see *The Late George Apley* in 1948 to the 150 who can fill the house for each performance our intimate theater today, without our patrons, all those hours and late nights spent rehearsing, designing, building would be for naught.

I also want to thank all those who have donated to T&C over the years. Your generosity has enabled us to keep the lights on, improve our infrastructure, and weather hard times (like the last couple of years).

When we started to plan our 75th season, we decided to focus on large cast, generally happy/uplifting shows after two seasons impacted by COVID. We also wanted to celebrate our 75th season by selecting shows with either a tie to either T&C or to the Bucks County area. Cult favorite *Clue* was first produced by T&C in 2006. This year's production, directed by Susan Galli, brings together a new cast and a new vision for the show. Whether you have seen our 2006 production or not, I hope you enjoy this one.

Matthew Schultheis

President, Town and Country Players

T&C WANTS YOU TO KNOW.....

Special Thanks

A special acknowledgement to Jon Knapp, Joe Schiwall and Stuart Wyss for going above and beyond to help.

Meet T&C's 2022 Board Members

Matthew Schultheis

President

Valerie Sharper

Executive Vice President

Victoria Schultheis

Vice President of Productions

David Sharper

Treasurer

Jim Moore

Secretary

Sarah LeClair

Vice President of Membership

Scott Monsees

Vice President of Tech Ops

Jessica Briggs/Fred Conover

VPs of Marketing & Publicity

Lynne Anne Donchez

Vice President of Hospitality

Roseann Enwright

Vice President of Fundraising

Jackie Parzanese

Vice President of Youth Outreach

T&C WANTS YOU TO KNOW.....

Become a Friend of Town and Country Players

This year Town and Country Players is celebrating its 75th Season.

Our theatre is run by volunteers and we rely on your generous, tax-deductible financial support to help defray the cost of our lovely, new modern facility. Please add your name to our "*Circle of Friends*" so that we can continue to provide you with high quality productions and theatre workshops for many years to come.

Your donation will be acknowledged on our "*Circle of Friends*" page next season.

We are deeply grateful for your generous support.

Please enclose the form below with your check or money order and mail to:

Town and Country Players
PO Box 323
Doylestown, PA 18901

Contributions can also be made through PayPal on our website at:

www.townandcountryplayers.org

Producer's Circle: \$1,000 and up
Director's Chair: \$500 - \$999
Leading Role: \$100 - \$499
Supporting Cast: Up to \$99

Name: _____

Street: _____

City: _____ State: _____ Zip: _____

Phone: _____

Email: _____

Town and Country Players is a 501(c)(3) Not-for-Profit organization
Your gift is tax deductible

ACKNOWLEDGEMENTS

CIRCLE OF FRIENDS

Thank you to our 2022 Donors



PRODUCER'S CIRCLE-
MARLIN TAYLOR
SARAH BARNES

LEADING ROLE-
PETER STEVENS
BRUCE SCHWAZIDELSON AND
REGINA ZDANOWSKI
LYNNE ANNE DOWCHEZ
LISA SOREN
ELIZABETH MASSA
HAROT HUANG

SUPPORTING ROLE-
CHRIS SERPICO
VERONICA KLOECK



www.townandcountryplayers.org

CANDLEWYCK BAR & GRILL

RESTAURANT • TAVERN • TAKE-OUT

- **Show your ticket stub and receive 20% off your check!**

This discount is good for one use and only valid the week of the ticket date

- **Stop by our Bottle Shop! “Home of 1,000 Beers” with the area’s BEST prices!**



2551 Durham Road (Corner of Rt 202 & 413) • 215-794-8233



FIRST PARTNERS ABSTRACT COMPANY

Give us a call
or
Check out our website:
www.firstpartnersabstract.com

*Interested in purchasing a home or refinancing
and need to a full service title insurance
company to assist you?*

Want to know a property's recorded history?

Curious about what title insurance involves?

We specialize in making the process of purchasing title insurance as simple as possible. At First Partners Abstract Company we want to make you a partner in the process. We strive to work together to make the transaction run as smoothly as possible.

Servicing Pennsylvania and New Jersey for over 25 years.

Our Newest office is located at:
**169 North Broad Street
Doylestown PA 18901.
Phone #: 267-864-5020**

Our Corporate office is located at:
**605 Corporate Drive West
Langhorne, PA 19047
Phone #: 215-579-3223**



WILLIAM PENN
BANK

FEATURING

**BANKING THAT
MAKES YOU THE
STAR OF THE SHOW**

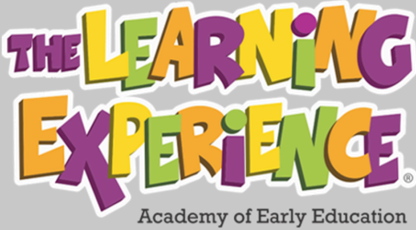
FDIC www.william penn.bank 800-845-3577 

Community Banking at heart.

**Open 7-days a week...
Stop by and find out
what we're all about!**



45 E. STATE ST., DOYLESTOWN, PA 18901



happy
happens
here.

1721 S Easton Road
Doylestown PA 18901
Phone: 215-343-3007
Doylestown@tlechildcare.com
Doylestown.tlechildcare.com



Larry E Krevitz, DDS PC

**Family & Cosmetic Dentistry
122 N York Road- Suite 11
Hatboro Pa 19040
Drkrevitz.com 215 674 2505
info@drkrevitz.com**

Excellence By Choice





Paul Waldowski
215-275-6741
PWaldowski24@gmail.com

Over 85
Years of
Professional
Experience



Meg Waldowski
215-275-6940
MWaldowski4@gmail.com



**Proud Supporter of
the Arts and Community Theater
in Bucks County**



Shelly Law Offices, LLC

Concentrating in Plaintiff Personal Injury and Wrongful Death Law



ph 267-454-7940 • fax 267-454-7941 • www.shelly-law.com
70 W. Oakland Ave., Suite 208 • Doylestown, PA 18901
carol@shelly-law.com • kwhite@shelly-law.com •
sfrankenfield@shelly-law.com





"The farmer has to be an optimist or he wouldn't still be a farmer"
Will Rogers

None Such Farming Season Highlights
 April to Late May....Herb Plants
 May to Early June....Asparagus
 Early to Mid June....Strawberries
 Late July to sometime in September....Sweet Corn and Tomatoes
 October....Pumpkins and Winter Squash
 All year....None Such Raised Black Angus Beef

Seasonal Events on None Such Farm
 Late April, Early May Saturdays & Sundays TBD
 Greenhouse open for purchase of our homegrown plants
 Early to Mid June TBD
 Pick Your Own Strawberries
 October Saturdays & Sundays TBD
 Our Pumpkin Fields are open

None Such Market

100% Black Angus Beef raised on our Farm
 100% Non-GMO Feed - Freshly Cut Steaks & Roasts - Freshly Ground Beef - Available in our Meat Shop

NONE SUCH MARKET open WEDNESDAY THROUGH SATURDAY 10 am to 6 pm
 Closed Sunday through Tuesday

4458 York Rd. Buckingham, PA 18912

215-794-5201

nonesuchfarm.com



"North America's Premier Inspection Service"
 Independently Owned & Operated

CHRIS MARSHALL

Owner / Inspector
 Bonded & Insured

PA Radon Cert. #2713



NATIONAL PROPERTY INSPECTIONS®

Residential • Commercial • Warranty Inspections • Relocation

Bus. (215) 579-1996 • Cell (215) 416-9013 • Fax (215) 579-1445
 email: cmarshallnpi@verizon.net • www.npiweb.com/cmarshall



Congratulations from all of us at the UPS Store!



The UPS Store
Serving Warminster & Doylestown

- Packing & Shipping
- Small Business Services
- Office & Mailing Services
- Professional Printing
- Mail & Postal Services
- Notary Services
- Faxing Services
- Veteran/Armed Service Discounts

DOYLESTOWN: 132-A VETERANS LANE
 215-230-9898 • store3797@theupsstore.com

WARMINSTER: 868 WEST STREET ROAD
 215-672-5330 • store4907@theupsstore.com

NEW STORE IN WARRINGTON: LATE SPRING/EARLY SUMMER 2022

CREMATION SHOULD NOT BE OUTSOURCED



Most funeral homes use a third-party contract crematory. Varcoe-Thomas assures every step of care for your loved one is managed within our private facility. If you choose cremation, let our family care for your family.

Jason "Oz" Oszczakiewicz
 Owner/Supervisor
 Serving Families with Compassion,
 Respect & Professionalism Since 1879

215-348-8930



State Of The Art Crematory Now On Site

344 North Main Street
 Doylestown, PA 18901

www.varcoethomasfuneralhome.com

Robert O'Reilly

Financial Advisor

Doylestown Wealth Management

165 West Ashland St.
Doylestown, PA 18901

Concerned about retirement?

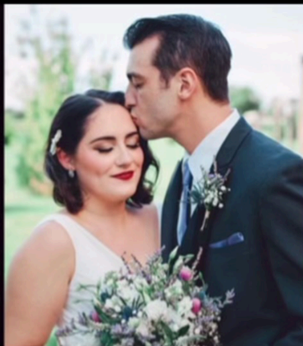
Call for a FREE consultation to discuss your financial goals. Find peace of mind with sound retirement planning advice.

267-815-5669

Robert.oreilly@lpl.com



DRESS YOUR BEST FOR
BRIDAL WITH DESIGNERS LIKE
MADI LANE, MORILEE,
STELLA YORK, MIA SOLANO,
AND MORE



ALL-INCLUSIVE TUXEDO AND
SUIT RENTALS FROM
DESIGNERS LIKE IKE BEHAR,
MICHAEL KORS, RALPH
LAUREN, AND MORE



Darianna 
Bridal & Tuxedo

241 Easton Road
Warrington, PA 18976

Call or Text: 215-491-8500
www.dariannabridal.com





Oak Mortgage, a Division of Republic First Bank dba, Republic Bank, NMLSR#738460.

Joshua I Lerman (NMLSR#135143)
215-962-8586
jlerman@myrepublicbank.com

JUST CALL JOSH TO GET PREQUALIFIED

Eight Neshaminy Interplex, Suite 105, Trevoze, PA 19053



Allstate[®]

You're in good hands.

**24-hour
Customer Service**

Mike McCusker

Agency Owner

McCusker Insurance Agency Inc

Allstate Insurance

Philadelphia, PA 19111

Phone 215-728-7800

Fax 215-728-7896

mikemccusker@allstate.com

10431 Academy Road, Suite "O"

Philadelphia, PA 19114

215-612-5558

**Shop Prime Day deals at
smile.amazon.com to
support us while you shop,
at no cost to you**

amazonsmile

When you #StartWithaSmile, Amazon donates 0.5% of the purchase price to Town and Country Players. Bookmark the link <https://smile.amazon.com/townandcountry> and support us every time you shop.

THE STATION THAT STILL REMEMBERS

Radio Delaware Valley
www.wrdv.org

BIG BAND • SWING • ROCK & ROLL
DOO-WOP • RHYTHM & BLUES
plus other old time nostalgia

BROADCASTING
IN PHILADELPHIA

**STREAMING
24/7 ONLINE**

Listen online at www.wrdv.org or with Alexa, Siri, & other digital assistants.

***Proud Supporter of
the Arts and Community Theater
in Bucks County***



Shelly Law Offices, LLC

Concentrating in Plaintiff Personal Injury and Wrongful Death Law

ph 267-454-7940 • fax 267-454-7941 • www.shelly-law.com
70 W. Oakland Ave., Suite 208 • Doylestown, PA 18901
carol@shelly-law.com • kwhite@shelly-law.com
• sfrankenfeld@shelly-law.com



**We Fight
Because We Care**

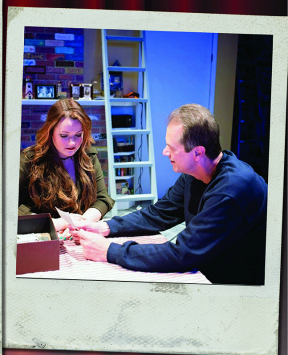
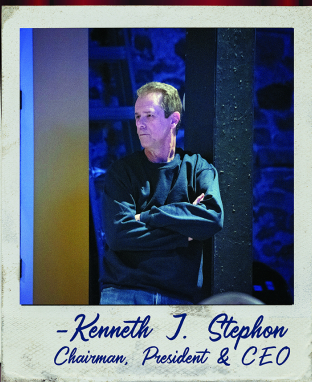
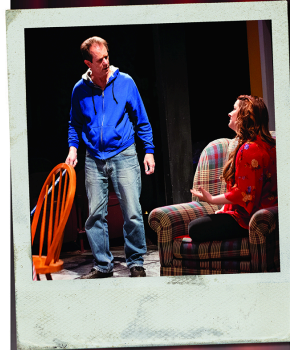
Fierce litigators who cut through the confusion.



WILLIAM PENN
BANK

Proudly Supports

Town and Country Players Theater's
75th Season
and their endless dedication
to performing and theater arts.



"Break A Leg, Town and Country Players"

Community Banking at heart.



www.williampenn.bank 800-845-3577

